

**UNIQUE**  
DESIGN FOR PEOPLE

UNIQUE-MEBLE.PL

**2025**  
**COLLECTION**



UNIQUE is a leading manufacturer and importer of modern furniture operating in the market since 2007. We combine innovative design with ergonomics and functionality and create spaces of unique character.

With many years of experience and a stable position in the market, our company has gained the trust of millions of users around the world.

Our furniture fits both traditional and modern interiors, is durable and functional, and combines a kind of strict elegance with sublime simplicity. We furnish public and commercial establishments, as well as home spaces.

Our young, creative team does its work with passion and commitment. We know the latest market trends and the needs of our customers, which, combined with our knowledge, skills and experience, allows us to offer products of the highest quality.

P R O D U C T S

OFFICE  
CHAIRS

4

|                     |    |                       |    |
|---------------------|----|-----------------------|----|
| ADELLA              | 43 | HOVE                  | 40 |
| ADELLA SKID         | 43 | ICE                   | 25 |
| ANGGUN              | 35 | LAPIS - SMART OFFICE  | 22 |
| ANGGUN SKID         | 35 | LIDER                 | 42 |
| APOLLO              | 37 | LINK                  | 37 |
| APOLLO SKID         | 37 | LINK S                | 37 |
| APUS                | 34 | LORD                  | 33 |
| APUS SKID           | 34 | MAGIC                 | 26 |
| ARAN                | 34 | MARK                  | 45 |
| ARES                | 46 | MASTER                | 19 |
| ARES MESH           | 46 | MILLO                 | 49 |
| ARES SOFT           | 46 | MOBI                  | 48 |
| ASOS                | 18 | MOBI PLUS             | 48 |
| ATLAS               | 24 | MOBI SKID             | 48 |
| AWARD               | 49 | NEZ                   | 36 |
| BLACK ON BLACK      | 47 | OVO                   | 13 |
| BLACK ON BLACK PLUS | 47 | PATRON                | 31 |
| BLOSSOM             | 44 | PIU                   | 28 |
| BLOSSOM SKID        | 44 | PLAY                  | 49 |
| BRANDO              | 44 | POGO                  | 23 |
| BRANDO SKID         | 44 | REGENT                | 32 |
| CELIO               | 43 | REYA                  | 12 |
| CHESTER             | 40 | ROBIN - SMART OFFICE  | 20 |
| COMBAT              | 49 | RONIN                 | 17 |
| COMMANDER           | 41 | SAGA PLUS             | 42 |
| CONCEPT             | 39 | SAIL                  | 43 |
| DART                | 40 | SAVILLE               | 34 |
| DEAL                | 35 | SCOPE                 | 38 |
| ELEGANCE            | 39 | SHELL                 | 40 |
| ERGO                | 15 | SONOMA                | 46 |
| ERGONIC             | 39 | SPACE                 | 10 |
| ERGOTECH            | 9  | SPINELLY              | 7  |
| ERGOTHRONE          | 8  | TASK                  | 38 |
| ESTA                | 41 | TORMENTA              | 29 |
| EXETER              | 39 | TRENT                 | 45 |
| EXPANDER            | 38 | TRENT S               | 45 |
| EXPLORE             | 41 | TUNE                  | 16 |
| FOCUS               | 11 | TURINI - SMART OFFICE | 21 |
| FORTE               | 36 | TWEED                 | 45 |
| FOX                 | 47 | ULTIMA                | 41 |
| FULKRUM             | 36 | V15                   | 50 |
| GRID                | 27 | V19                   | 50 |
| HERO                | 14 | V5                    | 50 |
| HOMY                | 48 | V7                    | 50 |

|                       |    |
|-----------------------|----|
| HOVE                  | 40 |
| ICE                   | 25 |
| LAPIS - SMART OFFICE  | 22 |
| LIDER                 | 42 |
| LINK                  | 37 |
| LINK S                | 37 |
| LORD                  | 33 |
| MAGIC                 | 26 |
| MARK                  | 45 |
| MASTER                | 19 |
| MILLO                 | 49 |
| MOBI                  | 48 |
| MOBI PLUS             | 48 |
| MOBI SKID             | 48 |
| NEZ                   | 36 |
| OVO                   | 13 |
| PATRON                | 31 |
| PIU                   | 28 |
| PLAY                  | 49 |
| POGO                  | 23 |
| REGENT                | 32 |
| REYA                  | 12 |
| ROBIN - SMART OFFICE  | 20 |
| RONIN                 | 17 |
| SAGA PLUS             | 42 |
| SAIL                  | 43 |
| SAVILLE               | 34 |
| SCOPE                 | 38 |
| SHELL                 | 40 |
| SONOMA                | 46 |
| SPACE                 | 10 |
| SPINELLY              | 7  |
| TASK                  | 38 |
| TORMENTA              | 29 |
| TRENT                 | 45 |
| TRENT S               | 45 |
| TUNE                  | 16 |
| TURINI - SMART OFFICE | 21 |
| TWEED                 | 45 |
| ULTIMA                | 41 |
| V15                   | 50 |
| V19                   | 50 |
| V5                    | 50 |
| V7                    | 50 |

|            |    |
|------------|----|
| VELO       | 36 |
| VIP        | 38 |
| VIPER      | 47 |
| VIRGO      | 30 |
| WAU / WAU2 | 6  |
| WORK       | 42 |
| ZOME       | 42 |

SPECIALISED  
PRODUCTS

52

|                        |    |
|------------------------|----|
| CARINO                 | 57 |
| CARMEN                 | 58 |
| ERIZO                  | 58 |
| FITNESS CHAIR F209DT   | 56 |
| FITNESS CHAIR F2216DBU | 56 |
| GORION                 | 59 |
| GORION R               | 59 |
| HALCON                 | 59 |
| HALCON R               | 59 |
| KADEN                  | 55 |
| MOGOO                  | 60 |
| MONTE                  | 58 |
| MONTE 2                | 57 |
| ROBIN – SMART OFFICE   | 57 |
| ROVER 2                | 54 |
| SITOOOL 303            | 60 |
| SITOOOL 304            | 60 |
| SWINGER                | 60 |
| TORO                   | 58 |

CHILDREN'S  
CHAIRS

62

|                     |    |
|---------------------|----|
| GOOFY               | 65 |
| ROOKEE              | 64 |
| SNOOPY              | 65 |
| SPARKY              | 65 |
| WING - SMART OFFICE | 65 |

CHAIRS  
AND HOCKERS

66

|         |    |
|---------|----|
| ALICE   | 78 |
| ALTO    | 80 |
| BARNET  | 69 |
| BRAVA   | 77 |
| BRAVO   | 77 |
| BRITTA  | 78 |
| CITY    | 75 |
| CLUB    | 79 |
| CORTO   | 80 |
| CUBE    | 79 |
| DESIGN  | 76 |
| DUKE    | 74 |
| EASY    | 78 |
| EASY A  | 79 |
| EASY AR | 79 |
| EASY R  | 78 |
| ENTRE   | 80 |
| FILA    | 72 |
| LINE    | 75 |
| MATA    | 70 |
| MUZE    | 76 |
| NOHO    | 73 |
| NOVO    | 68 |
| ROBY    | 75 |
| SETINA  | 76 |
| SHIFT   | 75 |
| SOPLO   | 80 |
| STILO   | 77 |
| TALIA   | 76 |

DESKS  
AND TABLES

82

|            |     |
|------------|-----|
| ACTIVE I   | 89  |
| ACTIVE II  | 89  |
| ACTIVE III | 90  |
| CALM       | 104 |
| CARL       | 95  |
| CARL TABLE | 94  |
| ELISE      | 101 |
| ENDO       | 92  |
| EVO        | 100 |

|                      |     |
|----------------------|-----|
| FIGHTER DOUBLE DESK  | 88  |
| FIGHTER SINGLE DESK  | 88  |
| GROW                 | 99  |
| LAPTOP DESK          | 99  |
| LESTE                | 99  |
| LUCY                 | 101 |
| LUKE                 | 101 |
| MARIN                | 100 |
| MARS MANAGER DESK    | 86  |
| MARS WORKSTATION     | 87  |
| MATT                 | 101 |
| METIS                | 91  |
| MULTI                | 90  |
| NEIL                 | 101 |
| NORTES               | 100 |
| OTIS                 | 99  |
| PASON MANAGER DESK   | 84  |
| PASON WORKSTATION    | 85  |
| Q-FORM               | 93  |
| QUICK                | 100 |
| RAINA DT             | 102 |
| ROUND                | 102 |
| SECA                 | 100 |
| TEO                  | 100 |
| TEXAS PMG            | 102 |
| TEXAS RDG            | 102 |
| V-GAME               | 99  |
| VENCHY               | 98  |
| VERO                 | 99  |
| WORKING ISLAND RS-55 | 103 |
| YUMI S               | 96  |
| YUMI BOARD           | 97  |

CONTAINERS  
AND CABINETS

106

|        |     |
|--------|-----|
| 324    | 112 |
| 325    | 112 |
| 424    | 111 |
| RP-01  | 113 |
| RP-04  | 113 |
| RPH-01 | 113 |

|        |     |
|--------|-----|
| RPH-02 | 113 |
| XD-001 | 109 |
| XD-015 | 111 |
| XD-018 | 111 |
| XD-020 | 111 |
| XD-027 | 110 |
| XD-029 | 110 |
| XD-030 | 110 |
| XD-032 | 108 |
| XD-034 | 110 |
| XD-040 | 112 |
| XD-041 | 112 |

SOFAS  
AND ARMCHAIRS

114

|         |     |
|---------|-----|
| ANGELES | 117 |
| ARMO    | 116 |
| PANTHON | 118 |
| TODO    | 119 |

ACCESSORIES

121

FINISHING  
PATTERNS

131



# OFFICE CHAIRS



# WΛU / WΛU 2

ITEM NO.: W-609 / W-709



**SPECIFICATIONS:**

- Slid mechanism
- Adjustable seat height
- Adjustable backrest height
- Adjustable depth of lumbar support
- Adjustable height of the headrest
- Adjustable 2D armrests with soft pads
- Base made of lacquered aluminum
- Maximum load capacity 130 kg

**AVAILABLE VERSIONS:**

- Construction (2 colors)
- Fabric BL (18 colors)
- Mesh NW (6 colors)
- Elastomer (2 colors)
- Natural leather (3 colors)

**CHAIR MEETS STANDARDS:**

- PN-EN 1335-1:2004
- PN-EN 1335-2:2009
- PN-EN 1335-3:2009
- PN-EN 1022:2007



# SPINELLY

ITEM NO.: W-999



**SPECIFICATIONS:**

- Synchron mechanism
- Adjustable seat height and depth
- Adjustable height of lumbar support
- Adjustable height of armrests with soft pads
- Base made of polished aluminum
- Maximum load capacity 130 kg

**AVAILABLE VERSIONS:**

- Construction (2 colors)
- Fabric BL (18 colors)
- Mesh (1 color)
- Natural leather (3 colors)

**AVAILABLE OPTIONS:**

- Spinely M (version without headrest)

**CHAIR MEETS STANDARDS:**

- PN-EN 1335-1:2004
- PN-EN 1335-2:2009
- PN-EN 1335-3:2009
- PN-EN 1022:2007



# ERGOTHRONE

ITEM NO.: CM-B37A



**SPECIFICATIONS:**

- Synchron mechanism
- Adjustable seat height and depth
- Adjustable backrest height
- Adjustable depth of lumbar support
- Adjustable height of the headrest
- Adjustable 5D armrests with soft pads
- Base made of lacquered aluminum
- Maximum load capacity 130 kg

**AVAILABLE VERSIONS:**

- Construction (2 colors)
- Mesh TO (1 color)

**AVAILABLE OPTIONS:**

- Possibility to equip the chair with footrest



# ERGOTECH

ITEM NO.: CM-B137A

**SPECIFICATIONS:**

- Synchron mechanism
- Adjustable seat height and depth
- Adjustable backrest height
- Adjustable height of the headrest
- Adjustable 3D armrests with soft pads
- Base made of strong plastic or polished aluminum
- Maximum load capacity 130 kg

**AVAILABLE VERSIONS:**

- Construction (3 colors)
- Mesh TO (2 colors)

**CHAIR MEETS STANDARDS:**

- PN-EN 1335-1:2004
- PN-EN 1335-2:2019
- PN-EN 1728:2012/AC:2013
- PN-EN 1022:2019



SPACE

ITEM NO.: CM-B265A-6



SPECIFICATIONS:

- Synchron mechanism
- Negative angle setting possible
- Adjustable seat height and depth
- Adjustable 3D armrests with soft pads
- Extendable footrest
- Base made of strong plastic
- Maximum load capacity 130 kg

AVAILABLE VERSIONS:

Mesh (1 color)



FOCUS

ITEM NO.: MLO



SPECIFICATIONS:

- Synchron mechanism
- Adjustable seat height and depth
- Adjustable backrest height
- Adjustable height of lumbar support
- Adjustable 3D armrests with soft pads
- Base made of polished aluminum
- Maximum load capacity 130 kg

AVAILABLE VERSIONS:

Construction (2 colors)  
Fabric (2 colors)  
Mesh (2 colors)

CHAIR MEETS STANDARDS:

PN-EN 1335-2:2019  
PN-EN 1728:2012/AC:2013  
PN-EN 1022:2019





# REYA

ITEM NO.: 1223/12289



**SPECIFICATIONS:**

Synchron mechanism  
Adjustable seat height and depth  
Adjustable height of the headrest  
Adjustable 2D armrests with soft pads  
Base made of lacquered aluminum  
Maximum load capacity 130 kg

**AVAILABLE VERSIONS:**

Construction (2 colors)  
Mesh RS (2 colors)  
Elastomer (1 color)

**AVAILABLE OPTIONS:**

Reya M (version without headrest)



# OVO

ITEM NO.: W-667



**SPECIFICATIONS:**

Synchron mechanism  
Adjustable height of the seat  
3D armrests with soft pads  
Base made of lacquered aluminum  
Maximum load capacity 130 kg

**AVAILABLE VERSIONS:**

Construction (2 colors)  
Fabric BL (18 colors)  
Mesh NW (6 colors)



# HERO

ITEM NO.: ZM-6661



**SPECIFICATIONS:**

- Synchron mechanism
- Adjustable seat height and depth
- Adjustable height of lumbar support
- Adjustable height and angle of the headrest
- Adjustable 4D armrests with soft pads
- Base made of polished aluminum
- Maximum load capacity 130 kg

**AVAILABLE VERSIONS:**

- Construction (2 colors)
- Fabric BLH (2 colors)
- Fabric SM (7 colors)
- Mesh NWH (2 colors)

**CHAIR MEETS STANDARDS:**

- PN-EN 1335-1:2004
- PN-EN 1335-2:2009
- PN-EN 1335-3:2009
- PN-EN 1022:2007



# ERGO

ITEM NO.: ZM-716A



**SPECIFICATIONS:**

- Synchron mechanism
- Adjustable seat height and depth
- Adjustable depth of lumbar support
- Adjustable 3D headrest
- Adjustable 4D armrests with soft pads
- Base made of plastic
- Maximum load capacity 130 kg

**AVAILABLE VERSIONS:**

- Fabric / mesh CW-AN (4 colors)

**AVAILABLE OPTIONS:**

- Ergo Low (version without headrest)



# TUNE

ITEM NO.: 139Y



**SPECIFICATIONS:**

Synchron mechanism  
Adjustable seat height and depth  
Adjustable backrest height  
Adjustable depth of lumbar support  
Adjustable height and angle of headrest  
Adjustable 3D armrests with soft pads  
Base made of plastic  
Maximum load 130 kg

**AVAILABLE VERSIONS:**

Construction (2 colors)  
Fabric BL (18 colors)  
Mesh (2 colors)  
Natural leather (3 colors)

**AVAILABLE OPTIONS:**

Tune M (version without headrest)

**CHAIR MEETS STANDARDS:**

PN-EN 1335-1:2004  
PN-EN 1335-2:2009  
PN-EN 1335-3:2009  
PN-EN 1022:2007



# RONIN

ITEM NO.: 1286/1289



**SPECIFICATIONS:**

Synchron mechanism  
Adjustable seat height and depth  
Adjustable depth and height of lumbar support  
Adjustable height of the headrest  
Adjustable 2D armrests with soft pads  
Base made of lacquered aluminum  
Maximum load capacity 130 kg

**AVAILABLE VERSIONS:**

Construction (2 colors)  
Mesh RS (2 colors)  
Elastomer (2 colors)

**CHAIR MEETS STANDARDS:**

PN-EN 1335-1+A1:2023-04  
PN-EN 1335-2:2019-03  
PN-EN 1728:2012/AC:2013  
PN-EN 1022:2019-03

**ADDITIONAL OPTIONS:**

Possibility to install a computer fan in the backrest





# ASOS

ITEM NO.: 986A-1



**SPECIFICATIONS:**

- Synchron mechanism
- Adjustable height of the seat
- Backrest equipped with a hanger
- Adjustable height of lumbar support
- Adjustable height and angle of the headrest
- Adjustable height of armrests with soft pads
- Base made of strong plastic or polished aluminum
- Maximum load capacity of 130 kg

**AVAILABLE VERSIONS:**

- Construction (2 colors)
- Fabric (2 colors)
- Mesh (2 colors)



# MASTER

ITEM NO.: MB161H-U



**SPECIFICATIONS:**

- Synchron mechanism
- Adjustable seat height and depth
- Adjustable backrest height
- Adjustable height of lumbar support
- Adjustable height and angle of headrest
- Adjustable height of armrests
- Base made of plastic
- Maximum load 130 kg

**AVAILABLE VERSIONS:**

- Fabric (1 color)
- Mesh (1 color)



# ROBIN - SMART OFFICE

ITEM NO.: KP



**SPECIFICATIONS:**

Adjustable height of the seat  
 Backrest angle adjusts to the user's back, range up to 15°  
 Base made of strong plastic (nylon)  
 Maximum load capacity of 130 kg

**AVAILABLE VERSIONS:**

Construction (2 colors)  
 Fabric VICO (6 colors)  
 Eco leather BST323 (4 colors)  
 Polyurethane plastic (2 colors)

**AVAILABLE OPTIONS:**

Possibility to install armrests  
 Product available in low or high version with height-adjustable chrome footrest



# TURINI - SMART OFFICE

ITEM NO.: KA



**SPECIFICATIONS:**

Adjustable height of the seat  
 3D balancing mechanism  
 Base made of strong plastic (nylon)  
 Maximum load capacity of 130 kg

**AVAILABLE VERSIONS:**

Construction (1 color)  
 Fabric MOON (5 colors)

**AVAILABLE OPTIONS:**

The product is available in a low version with a backrest, without a backrest or a high version with a chrome footrest with height adjustment.





# LAPIS - SMART OFFICE

ITEM NO.: KW11



**SPECIFICATIONS:**

- Adjustable height of the seat
- Backrest angle adjusts to the user's back, range up to 15°
- Base made of strong plastic (nylon)
- Maximum load capacity of 130 kg

**AVAILABLE VERSIONS:**

- Construction (2 colors)
- Fabric VICO (3 colors)
- Mesh HY2050 (3 colors)

**AVAILABLE OPTIONS:**

- Possibility to install armrests

# P O G O

ITEM NO.: 433/434



**SPECIFICATIONS:**

- Adjustable height of the seat
- Backrest, armrests and seat made of plastic form an integral piece
- Backrest and seat available with upholstered overlay
- Base made of strong plastic
- Maximum load capacity of 130 kg

**AVAILABLE VERSIONS:**

- Construction (4 colors)
- Fabric on seat BL (18 colors)
- Fabric on backrest BL (18 colors)



# ATLAS

ITEM NO.: ZM-2225H



**SPECIFICATIONS:**

- Synchron mechanism
- Adjustable seat height and depth
- Adjustable depth of lumbar support with an inflatable cushion
- Adjustable height and angle of headrest
- Adjustable angle of inclination of armrests
- Six-star base made of plastic
- Maximum load capacity 150 kg

**AVAILABLE VERSIONS:**

- Eco-leather (1 color)
- Fabric HY2095 (2 colors)

**CHAIR MEETS STANDARDS:**

BS 5459-2:2000 (24/7 exploitation)



# ICE

ITEM NO.: 2223HB



**SPECIFICATIONS:**

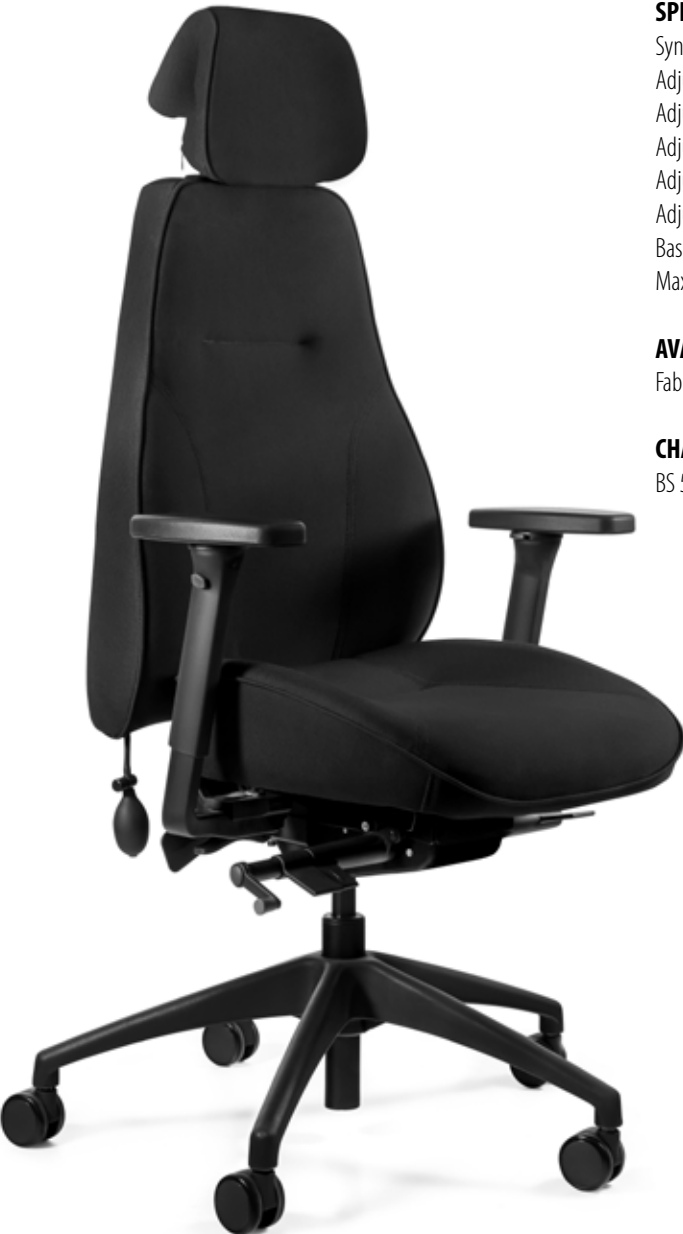
- Synchron mechanism
- Adjustable seat height and depth
- Adjustable depth of lumbar support
- Adjustable backrest height
- Adjustable 3D headrest
- Adjustable armrests 4D with soft pads
- Base made of plastic
- Maximum load 150 kg

**AVAILABLE VERSIONS:**

- Fabric (1 color)

**CHAIR MEETS STANDARDS:**

BS 5459-2:2000 (24/7 exploitation)



# MAGIC

ITEM NO.: UN2408-1HB



**SPECIFICATIONS:**

- Synchron mechanism
- Adjustable seat height and depth
- Adjustable seat forward tilt angle
- Adjustable backrest height
- Adjustable depth and height of lumbar support
- Adjustable height and angle of headrest
- Adjustable 4D armrests
- Base made of lacquered aluminum
- Maximum load 130 kg

**AVAILABLE VERSIONS:**

Fabric MOZART (1 color)

**AVAILABLE OPTIONS:**

Magic M (version without headrest)



# GRID

ITEM NO.: UN2405-1H



**SPECIFICATIONS:**

- Synchron mechanism
- Adjustable seat height and depth
- Adjustable seat forward tilt angle
- Adjustable backrest height
- Adjustable depth and height of lumbar support
- Adjustable height and angle of headrest
- Adjustable 4D armrests
- Base made of polished aluminum
- Maximum load 130 kg

**AVAILABLE VERSIONS:**

Fabric MOZART (1 color)

Mesh SL (1 color)

**AVAILABLE OPTIONS:**

Grid M (version without headrest)





# PIU

ITEM NO.: UN1901-9H



## SPECIFICATIONS:

- Synchron mechanism
- Adjustable seat height and depth
- Adjustable backrest height
- Adjustable height and angle of headrest
- Adjustable height of armrests
- Base made of lacquered aluminum
- Maximum load 150 kg

## AVAILABLE VERSIONS:

Fabric TW-AE (1 color)

## AVAILABLE OPTIONS:

Piu M (version without headrest)



# TORMENTA

ITEM NO.: UN2101-2H



## SPECIFICATIONS:

- Multiblock mechanism
- Adjustable seat height
- Adjustable backrest angle
- Adjustable height and angle of headrest
- Adjustable armrest angle
- Base made of polished aluminum
- Maximum load 200 kg

## AVAILABLE VERSIONS:

Fabric TW-AE (1 color)



VIRGO

ITEM NO.: CM-B327ASK



SPECIFICATIONS:

- Synchron mechanism
- Adjustable seat height
- Adjustable height of the headrest
- Armrests made of brushed aluminum with soft pads
- Base made of brushed aluminum
- Maximum load 130 kg

AVAILABLE VERSIONS:

- Natural leather (2 colors)
- Eco-leather (2 colors)



PATRON

ITEM NO.: CM-K019AS



SPECIFICATIONS:

- Synchron mechanism
- Adjustable seat height
- Base made of polished aluminum with nylon reinforcement
- Maximum load capacity 130 kg

AVAILABLE VERSIONS:

- Natural leather (1 color)

DODATKOWE OPCJE:

- Dedicated footrest from the collection available



# REGENT

ITEM NO.: 689B-FL



**SPECIFICATIONS:**

Synchron mechanism  
Adjustable seat height  
Adjustable height of the headrest  
Armrest pads made of solid wood  
Base made of chromed aluminum  
Maximum load capacity 130 kg

**AVAILABLE VERSIONS:**

Natural leather (2 colors)



# LORD

ITEM NO.: CM-B63AS



**SPECIFICATIONS:**

Multiblock mechanism  
Adjustable seat height  
Armrests made of wood with soft pads  
Base made of brushed steel  
Maximum load capacity 130 kg

**AVAILABLE VERSIONS:**

Natural leather (1 color)





APUS

ITEM NO.: 2008A



APUS SKID

ITEM NO.: 2008D



DEAL

ITEM NO.: GA-023H



DEAL

ITEM NO.: GA-025H-U



SAVILLE

ITEM NO.: Y-2828



ARAN

ITEM NO.: 2244



ANGGUN

ITEM NO.: 1199



ANGGUN SKID

ITEM NO.: 1191-B



FORTE

ITEM NO.: W-969Y



FULKRUM

ITEM NO.: P069



LINK

ITEM NO.: GS021H



LINK S

ITEM NO.: GS021V



VELO

ITEM NO.: W-899Y



NEZ

ITEM NO.: W-879K



APOLLO

ITEM NO.: W-909



APOLLO SKID

ITEM NO.: W-901





SCOPE

ITEM NO.: ZM-511A-H



TASK

ITEM NO.: MY02-2H



ELEGANCE

ITEM NO.: CM-B263AS-1



CONCEPT

ITEM NO.: CM-B253AS-1



VIP

ITEM NO.: W-80



EXPANDER

ITEM NO.: W-94



EXETER

ITEM NO.: W-202BC



ERGONIC

ITEM NO.: 1506H



SHELL

ITEM NO.: KB02-1H



CHESTER

ITEM NO.: W-213C-4



ESTA

ITEM NO.: FS02-1H



EXPLORE

ITEM NO.: W-175AC



DART

ITEM NO.: GR021H



HOVE

ITEM NO.: 2244



COMMANDER

ITEM NO.: 5394-B



ULTIMA

ITEM NO.: 9009-A



SAGA PLUS

ITEM NO.: 1219-B



WORK

ITEM NO.: 1268



CELIO

ITEM NO.: C169



SAIL

ITEM NO.: S-499



ZOME

ITEM NO.: 9012-B



LIDER

ITEM NO.: 868-A



ADELLA

ITEM NO.: C239



ADELLA SKID

ITEM NO.: C231





# BRANDO

ITEM NO.: C049



# BRANDO SKID

ITEM NO.: C041



# TRENT

ITEM NO.: 1508A



# TRENT S

ITEM NO.: 1508D



# BLOSSOM

ITEM NO.: S-579



# BLOSSOM SKID

ITEM NO.: S-571



# TWEED

ITEM NO.: 1495A



# MARK

ITEM NO.: CM-B250AS



SONOMA

ITEM NO.: W-939



ARES

ITEM NO.: S629



VIPER

ITEM NO.: W-03



FOX

ITEM NO.: W-153A



ARES SOFT

ITEM NO.: S569



ARES MESH

ITEM NO.: S569



BLACK ON BLACK

ITEM NO.: W-93A



BLACK ON BLACK PLUS

ITEM NO.: W-93A-P



MOBI PLUS

ITEM NO.: W-952



MOBI

ITEM NO.: W-95



MILLO

ITEM NO.: W-157-1



PLAY

ITEM NO.: 858-4



MOBI SKID

ITEM NO.: W-953



HOMY

ITEM NO.: W-232



AWARD

ITEM NO.: W-120



COMBAT

ITEM NO.: UN-44





## V 1 9

ITEM NO.: D-8107-G/B



## V 1 5

ITEM NO.: Y-2898



## V 7

ITEM NO.: Y-2706



## V 5

ITEM NO.: Y-2689



A modern laboratory environment featuring white cabinetry, microscopes, and specialized ergonomic chairs. The chairs are black with adjustable seats and footrests. The text "SPECIALISED PRODUCTS" is overlaid on the right side of the image.

# SPECIALISED PRODUCTS



# ROVER 2

ITEM NO.: 924G



**SPECIFICATIONS:**  
Swivel seat  
Work surface with 360° rotation  
Base made of plastic with space for personal belongings  
Maximum load capacity 130 kg

**AVAILABLE VERSIONS:**  
Fabric BL (18 colors)



# KADEN

ITEM NO.: 1167N2D2



**SPECIFICATIONS:**  
3D Tilt balancing mechanism  
Adjustable seat height  
Adjustable footrest height  
Backrest equipped with a hanger  
Base made of plastic equipped with feet  
Maximum load 130 kg

**AVAILABLE VERSIONS:**  
Eco-leather PVC (1 color)  
Plastic (2 colors)

**AVAILABLE OPTIONS:**  
Kaden low (version with base on wheels, without chrome footrest)



# FITNESS CHAIR F2216DBU

ITEM NO.: F2216DBU



**SPECIFICATIONS:**

- Adjustable seat height
- Adjustable depth of lumbar support
- Adjustable height and angle of headrest
- Adjustable 2D armrests
- Backrest equipped with a hanger
- Integrated digital display
- Silent magnetic pedal system
- Wheels equipped with a brake
- Maximum load capacity 130 kg

**AVAILABLE VERSIONS:**

Construction (1 color)

# FITNESS CHAIR F209DT

ITEM NO.: F209DT



**SPECIFICATIONS:**

- Adjustable height of the seat with a gas spring
- Table top made of MDF board
- Adjustable height and depth of the tabletop
- Integrated digital display
- 8 degrees of resistance strength adjustment
- Quiet pedaling system
- Base made of steel
- Base equipped with folding legs and wheels with brake
- Maximum load 130 kg

**AVAILABLE VERSIONS:**

Construction (1 color)

# ROBIN - SMART OFFICE

ITEM NO.: KM



# ROBIN - SMART OFFICE

ITEM NO.: KM



# CARINO

ITEM NO.: ZM-2246



# MONTE 2

ITEM NO.: ZM-2233



MONTE

ITEM NO.: ZM-2236



CARMEN

ITEM NO.: ZM-2242



GORION

ITEM NO.: 5001



GORION R

ITEM NO.: 5001R



ERIZO

ITEM NO.: 5005



TORO

ITEM NO.: 5003



HALCON

ITEM NO.: 5001-2



HALCON R

ITEM NO.: 5001R-2



## SWINGER

ITEM NO.: ZM-2239



## MOGOO

ITEM NO.: 1063-G



## SITOOOL 303

ITEM NO.: 303



## SITOOOL 304

ITEM NO.: 304







# CHILDREN'S CHAIRS

# ROOKEE

ITEM NO.: 1186



## SPECIFICATIONS:

Adjustable seat height and depth  
Adjustable backrest height  
Base made of plastic equipped with footrest  
Maximum load capacity 100 kg

## AVAILABLE VERSIONS:

Fabric BL (18 colors)

## CHAIR MEETS STANDARDS:

PN-EN 1335-2:2019  
PN-EN 1728:2019/AC:2013  
PN-EN 1022:2019



# SPARKY

ITEM NO.: W-134AB



# SNOOPY

ITEM NO.: MR-102A



# GOOFY

ITEM NO.: MR-101



# WING - SMART OFFICE

ITEM NO.: KS





# CHAIRS AND HOCKERS



NOVO

ITEM NO.: TC-2163



**SPECIFICATIONS:**

Swivel seat with self-reversing mechanism  
Base made of lacquered steel  
Maximum load capacity 130 kg

**AVAILABLE VERSIONS:**

Eco-leather (2 colors)



BARNET

ITEM NO.: 9-05-PU



**SPECIFICATIONS:**

Swivel seat  
Adjustable seat height  
Base made of lacquered steel  
Maximum load capacity 130 kg

**AVAILABLE VERSIONS:**

Eco-leather (2 colors)

**AVAILABLE OPTIONS:**

Barnet A (version with base on four legs)





# MATA

ITEM NO.: G056



**SPECIFICATIONS:**

Backrest and seat made of strong plastic forming an integral piece  
 Seat equipped with a handle for easy carrying  
 Seat available with upholstered padding

**AVAILABLE VERSIONS:**

Construction (2 colors)  
 Fabric BL (18 colors)

**AVAILABLE OPTIONS:**

**Chair (4 legs)**

Legs made of chrome-plated steel  
 Stackable up to 4 pieces

**Swivel chair (swivel)**

Adjustable seat height  
 Base made of plastic

**Benches (3-seater bench, 4-seater bench)**

Base made of powder-coated steel  
 3-seater or 4-seater benches available

**CHAIR MEETS STANDARDS:**

PN-EN 16139:2013-07  
 PN-EN 1728:2012/AC:2013-09  
 PN-EN 1022:2024-04



# MATA

ITEM NO.: G056



# FILA

ITEM NO.: 883C



**SPECIFICATIONS:**

Backrest construction made of plastic  
Stackable  
Ability to easily connect the chairs “redy link”  
Maximum load capacity of 130 kg

**AVAILABLE VERSIONS:**

Plastic on seat (5 colors)  
Fabric on seat BL (18 colors)  
Fabric on the backrest BL (18 colors)



# N O H O

ITEM NO.: CM-B320BS



**SPECIFICATIONS:**

Swivel seat  
Adjustable seat height  
Base made of lacquered steel equipped with footrest  
Maximum load capacity 130 kg

**AVAILABLE VERSIONS:**

Construction (2 colors)  
Eco-leather (2 colors)



DUKE

ITEM NO.: 7-87A



**SPECIFICATIONS:**

Seat structure made of plastic  
Seat covered with sponge  
Base made of lacquered steel  
Maximum load capacity 130 kg

**AVAILABLE VERSIONS:**

Construction (2 colors)  
Eco-leather (4 colors)

SHIFT

ITEM NO.: CV-B259BPS-2



ROBY

ITEM NO.: 5390-D



LINE

ITEM NO.: 9-158E



CITY

ITEM NO.: 9-156A-1





TALIA

ITEM NO.: C01-18028-PU



SETINA

ITEM NO.: SET-PU



BRAVO

ITEM NO.: 9-218



BRAVA

ITEM NO.: 9-218A



DESIGN

ITEM NO.: DES



MUZE

ITEM NO.: 94



STILO

ITEM NO.: 9-235



STILO

ITEM NO.: 9-235A



ALICE

ITEM NO.: ALICE



BRITTA

ITEM NO.: TC-2264



EASY A

ITEM NO.: 7-08A



EASY AR

ITEM NO.: 7-08AR



EASY

ITEM NO.: 7-08



EASY R

ITEM NO.: 7-08R



CLUB

ITEM NO.: GY-4006



CUBE

ITEM NO.: X-5105



ALTO

ITEM NO.: TP-06



ENTRE

ITEM NO.: TP-07



CORTO

ITEM NO.: TP-08



SOPLO

ITEM NO.: TP-05







# DESKS AND TABLES

# PASON MANAGER DESK

ITEM NO.: PASON-MD



**SPECIFICATIONS:**

Top made of MFC board  
Edge made of ABS plastic  
Frame made of lacquered steel  
Frame equipped with leveling feet

**AVAILABLE VERSIONS:**

Frame (2 colors)  
Top (4 colors)

**AVAILABLE OPTIONS:**

Available in the offer frame alone or frame + top  
Dedicated accessories: mediaports, cable channels, etc.

**DIMENSIONS:**

1500x800 mm  
1800x800 mm



# PASON WORKSTATION

ITEM NO.: PASON-W



**SPECIFICATIONS:**

Top made of MFC board  
Edge made of ABS plastic  
Frame made of lacquered steel  
Frame equipped with leveling feet

**AVAILABLE VERSIONS:**

Frame (2 color)  
Top (4 colors)

**AVAILABLE OPTIONS:**

Workstation 2 - two-station system  
Workstation 4 - four-station system  
Workstation 6 - six-station system  
Available in the offer frame alone or frame + top  
Dedicated accessories: mediaports, cable ducts, etc.

**DIMENSIONS:**

1200x1400 mm  
2400x1400 mm  
3600x1400 mm





# MARS MANAGER DESK

ITEM NO.: MARS-MD



**SPECIFICATIONS:**

Top made of MFC board  
Edge made of ABS plastic  
Frame made of lacquered steel  
Frame equipped with leveling feet

**AVAILABLE VERSIONS:**

Frame (1 color)  
Top (1 color)

**AVAILABLE OPTIONS:**

Available in the offer frame alone or frame + top  
Dedicated accessories: mediaports, cable channels, etc.

**DIMENSIONS:**

1500x800 mm  
1800x800 mm

# MARS WORKSTATION

ITEM NO.: MARS-W



**SPECIFICATIONS:**

Top made of MFC board  
Edge made of ABS plastic  
Frame made of lacquered steel  
Frame equipped with leveling feet

**AVAILABLE VERSIONS:**

Frame (1 color)  
Top (1 color))

**AVAILABLE OPTIONS:**

Workstation 2 - two-station system  
Workstation 4 - four-station system  
Workstation 6 - six workstation system  
Available in the offer frame alone or frame + top  
Dedicated accessories: mediaports, cable ducts, etc.

**DIMENSIONS:**

1200x1400 mm  
2400x1400 mm  
3600x1400 mm



# FIGHTER SINGLE DESK

ITEM NO.: FIGHTER-SD



**DIMENSIONS:**  
1400x700 mm  
1600x700 mm  
Frame height range 610-1260 mm  
Frame width range 1000-1800 mm

**SPECIFICATIONS:**  
Top made of MFC board  
Edge made of ABS plastic  
3-column frame made of lacquered steel  
Frame with leveling feet  
Set includes vertical cable duct  
Control panel with LED display with possibility to save 4 positions  
Soft start/stop  
2 motors with speed 32mm/sec  
Power supply 110-240v, 50-60hz  
Anti-collision system  
Maximum tabletop load 120kg

**AVAILABLE VERSIONS:**  
Frame (2 colors)  
Table top (4 colors)

**AVAILABLE OPTIONS:**  
Available in the offer frame alone or frame + top

# FIGHTER DOUBLE DESK

ITEM NO.: FIGHTER-DD



**DIMENSIONS:**  
2 tops 1400x700 mm  
2 tops 1600x700 mm  
Frame height range 610-1260 mm  
Frame width range 1000-1800 mm

**SPECIFICATIONS:**  
Top made of MFC board  
Edge made of ABS plastic  
3-column frame made of lacquered steel  
Frame is equipped with leveling feet  
Frame fitted with central cable channel, allowing 4 outlets to be configured  
Frame equipped with a holder for partition wall  
Set includes 2 vertical cable ducts  
Control panel with LED display with possibility to save 4 positions  
Soft start/stop  
4 motors with speed of 32mm/sec  
Power supply 110-240v, 50-60hz  
Anti-collision system  
Maximum tabletop load 120kg

**AVAILABLE VERSIONS:**  
Frame (2 colors)  
Table top (4 colors)

**AVAILABLE OPTIONS:**  
Available in the offer frame alone or frame + top

# ACTIVE I

ITEM NO.: 01-C103W



**DIMENSIONS:**  
140x70 cm  
160x70 cm  
Frame height range 600-1250 mm  
Frame width range 1190-1500 mm

**SPECIFICATIONS:**  
Top made of MFC board  
Edging made of ABS plastic  
3-column frame made of powder-coated steel  
Frame equipped with leveling feet  
Control panel with LED display with possibility to save 3 positions  
Soft start/stop  
2 motors with a speed of 30 mm/s  
Power supply 110-240 V, 50-60Hz  
Anti-collision system  
Configurable maximum/minimum height limits  
Parental protection (controller lock)  
Maximum tabletop load of 100 kg

**AVAILABLE VERSIONS:**  
Frame (2 colors)  
Tabletop (4 colors)

**AVAILABLE OPTIONS:**  
Available in the offer frame alone or frame + top

# ACTIVE II

ITEM NO.: 05-C103W



**DIMENSIONS:**  
2 tops 140x70 cm  
2 tops 160x70 cm  
Frame height range 600-1250 mm  
Frame width range 1190-1500 mm

**SPECIFICATIONS:**  
Top made of MFC board  
Edge made of ABS plastic  
3-column frame made of powder-coated steel  
Frame equipped with leveling feet  
Frame equipped with central cable duct, allowing any configuration of 4 outlets  
Frame equipped with brackets for partition wall  
Control panel with LED display with possibility to save 3 positions  
Soft start/stop  
4 motors with a speed of 30 mm/s  
Power supply 110-240 V, 50-60Hz  
Anti-collision system  
Configurable maximum/minimum height limits  
Parent protection (controller lock)  
Maximum tabletop load 100 kg x2

**AVAILABLE VERSIONS:**  
Frame (2 colors)  
Tabletop (4 colors)

**AVAILABLE OPTIONS:**  
Available in the offer frame alone or frame + top

# ACTIVE III

ITEM NO.: 09-C103W



**SPECIFICATIONS:**  
3-column frame made of powder-coated steel  
Frame equipped with leveling feet  
Control panel with LED display with possibility to save 3 positions  
Soft start/stop  
3 motors with a speed of 30 mm/s  
Power supply 110-240 V, 50-60Hz  
Anti-collision system  
Configurable maximum/minimum height limits  
Parental protection (controller lock)

**DIMENSIONS:**  
Frame height range 600-1250 mm (3 sections)  
Frame width range 1400-1800 mm

**AVAILABLE VERSIONS:**  
Frame (2 colors)

# METIS

ITEM NO.: METIS



**SPECIFICATIONS:**  
Top made of MFC board  
Edging made of PVC plastic  
2-column frame made of lacquered steel  
Frame equipped with leveling feet  
Control panel with LED display with possibility to save 2 positions  
Soft start/stop  
1 motor with speed 16 mm/s  
Power supply 100-240v  
Anti-collision system  
Maximum tabletop load 50 kg

**AVAILABLE VERSIONS:**  
Frame (2 colors)  
Table top (2 colors)

**AVAILABLE OPTIONS:**  
Available in the offer frame alone or frame + top

**DIMENSIONS:**  
1200x600 mm  
1400x600 mm  
1600x600 mm  
Frame height range 700-1150mm  
Frame width range 910-1340mm

# MULTI

ITEM NO.: ET223T(IB)



**SPECIFICATIONS:**  
3-column frame made of powder-coated steel  
Frame equipped with leveling feet  
Control panel with LED display with possibility to save 3 positions  
Sound system to remind you to change position  
3 motors with speed of 38 mm/s  
Power supply 100-127v / 200-240v  
Anti-collision system  
Maximum load 150 kg

**DIMENSIONS:**  
Frame height range 580-1230 mm  
Frame width range 1240-2740 mm

**AVAILABLE VERSIONS:**  
Frame (2 colors)

**AVAILABLE OPTIONS:**  
Rack angle configuration:  
L-frame: 90°  
V- frame: 120°  
I- frame: 180°



## E N D O

ITEM NO.: CD201-1106

**SPECIFICATIONS:**

Tabletop made of MFC board  
 The top has an adjustable angle of inclination from 0° to 40°  
 Edging made of PVC plastic  
 2-column frame made of lacquered steel  
 Frame equipped with leveling feet  
 Control panel with LED display  
 Soft start/stop  
 1 motor with speed 15 mm/s  
 Power supply 100-240v  
 Anti-collision system  
 Maximum tabletop load 40 kg

**AVAILABLE VERSIONS:**

Frame (2 colors)  
 Tabletop (1 color)

**DIMENSIONS:**

1120x600 mm  
 Frame height range 560-900 mm



## Q - F O R M

ITEM NO.: ET223-Q

**SPECIFICATIONS:**

Top made of MFC board  
 Edging made of ABS plastic  
 Frame made of powder coated steel  
 Frame equipped with leveling feet  
 Control panel with LED display with possibility of saving 3 positions  
 Soft start/stop  
 4 motors with speed 38 mm/s  
 Power supply 110-240V  
 Anti-collision system  
 Maximum tabletop load 200 kg

**AVAILABLE VERSIONS:**

Frame (1 color)  
 Tabletop (4 colors)

**AVAILABLE OPTIONS:**

Available in the offer frame alone or a set of frame + top

**DIMENSIONS:**

1500x800 mm  
 1800x800 mm  
 Frame height range 605-1255 mm  
 Frame width range 110-1900 mm





# CARL TABLE

ITEM NO.: CARL



**SPECIFICATIONS:**  
 Top made of MFC board  
 Edge made of ABS plastic  
 Frame made of powder-varnished steel  
 Legs made of lacquered aluminium  
 The frame has a central folding system with a lock to prevent folding  
 Frame equipped with castors with brakes

**AVAILABLE VERSIONS:**  
 Frame (2 colors)  
 Top (4 colors)

**AVAILABLE OPTIONS:**  
 Available in the offer frame alone or a set of frame + top

**DIMENSIONS:**  
 2000x1000 mm  
 2400x1000 mm



# CARL

ITEM NO.: CARL



**SPECIFICATIONS:**  
 Top made of MFC board  
 Edge made of ABS plastic  
 Frame made of powder-coated steel  
 Legs made of lacquered aluminium  
 Frame has a cable system with folding and unfolding function  
 Frame equipped with castors with brakes  
 Frame equipped with bottle holder and hanger

**AVAILABLE VERSIONS:**  
 Frame (2 colors)  
 Top (4 colors)

**AVAILABLE OPTIONS:**  
 Available in the offer frame alone or a set of frame + top

**DIMENSIONS:**  
 1500x800 mm  
 1800x800 mm



# YUMI S

ITEM NO.: YUMI-S



**SPECIFICATIONS:**

Top made of MFC board  
Edge made of ABS plastic  
Frame made of powder-coated steel  
Frame has folding and unfolding function with locking latch  
Frame equipped with castors with brakes

**AVAILABLE VERSIONS:**

Frame (2 colors)  
Top (3 colors)

**AVAILABLE OPTIONS:**

Available in the offer frame alone, frame + top or frame + top + masking panel

**DIMENSIONS:**

1200x700 mm  
1500x700 mm  
1800x700 mm

# YUMI BOARD

ITEM NO.: YUMI-BOARD



**SPECIFICATIONS:**

Double-sided writing board  
Frame made of powder-coated steel  
Frame equipped with casters with brake

**AVAILABLE VERSIONS:**

Frame (2 colors)

# VENCHY

ITEM NO.: VENCHY



**SPECIFICATIONS:**  
Top made of MFC board  
Base made of brushed stainless steel

**AVAILABLE VERSIONS:**  
Frame (1 color)  
Top (4 colors)

**AVAILABLE OPTIONS:**  
Available in the offer frame alone or set of frame + top

**DIMENSIONS:**  
450x800 mm  
750x800 mm  
1100x800 mm

# V - GAME

ITEM NO.: GET119X-L



# VERO

ITEM NO.: ET119W-C



# OTIS

ITEM NO.: ET157



# GROW

ITEM NO.: ET223(1B)



# LESTE

ITEM NO.: JSBG-142-1



# LAPTOP DESK

ITEM NO.: 17-QC402





MARIN

ITEM NO.: TCD-1300



NORTES

ITEM NO.: JSBG-22



LUKE

ITEM NO.: 23159



MATT

ITEM NO.: 23158



QUICK

ITEM NO.: HY003T



SECA

ITEM NO.: 1734



NEIL

ITEM NO.: 23149



ELISE

ITEM NO.: 2065



TEO

ITEM NO.: CTB-002



EVO

ITEM NO.: 2394



LUCY

ITEM NO.: 2113



TEXAS RDG

ITEM NO.: RDG



ROUND

ITEM NO.: GY-639



TEXAS PMG

ITEM NO.: PMG



RAINA DT

ITEM NO.: DT



WORKING ISLAND RS-55

ITEM NO.: RS-55



**SPECIFICATIONS:**  
Top made of MFC board  
Edging made of ABS plastic  
Frame made of lacquered steel  
Frame equipped with leveling feet  
Configurable height of tops ( 2 levels)  
LED lighting  
4 electric sockets

**AVAILABLE VERSIONS:**  
Frame (2 colors)  
Tabletop (4 colors)

**OVERALL DIMENSION:**  
Height : 2200 mm  
Length : 3155 mm  
Depth: 1110 mm

**TABLETOP DIMENSION:**  
Length: 1500 mm  
Depth: 900 mm

# CALM

ITEM NO.: EPD101



## SPECIFICATIONS:

- Quick electronic assembly system
- Foldable work surface
- USB charging ports
- Adjustable led lighting
- Noise reduction of 25db
- Mobile construction equipped with wheels and feet
- Ventilation system
- Motion sensor
- Electric socket







# CONTAINERS AND CABINETS

# XD - 032

ITEM NO.: XD-032



**SPECIFICATIONS:**

Frame made of lacquered steel  
Adjustable height of shelves  
Door secured with electric lock and two keys  
Internal drawers secured with key lock  
Maximum load capacity of the shelf 60 kg

**AVAILABLE VERSIONS:**

Frame (3 colors)



# XD - 001

ITEM NO.: XD-001



**SPECIFICATIONS:**

Frame made of lacquered steel  
Container equipped with a set (2 pieces) of file hooks  
Drawers allow hanging files  
Cylindrical central lock with two keys

**AVAILABLE VERSIONS:**

Frame (3 colors)

**AVAILABLE OPTIONS:**

XD-001-2D (two drawers)  
XD-001-3D (three drawers)  
XD-001-4D (four drawers)



**X D - 0 2 7**

ITEM NO.: XD-027



**X D - 0 2 9**

ITEM NO.: XD-029



**X D - 0 1 5**

ITEM NO.: XD-015



**X D - 0 1 8**

ITEM NO.: XD-018



**X D - 0 3 0**

ITEM NO.: XD-030



**X D - 0 3 4**

ITEM NO.: XD-034



**X D - 0 2 0**

ITEM NO.: XD-020



**4 2 4**

ITEM NO.: 424





3 2 4

ITEM NO.: 324



3 2 5

ITEM NO.: 325



R P - 0 1

ITEM NO.: RP-01



R P - 0 4

ITEM NO.: RP-04



X D - 0 4 0

ITEM NO.: XD-040



X D - 0 4 1

ITEM NO.: XD-041



R P H - 0 1

ITEM NO.: RPH-01



R P H - 0 2

ITEM NO.: RPH-02





# SOFAS AND ARMCHAIRS



## ARMO

ITEM NO.: C201B



### SPECIFICATIONS:

Upholstered with eco-leather  
Base made of chrome-plated steel

### AVAILABLE VERSIONS:

Eco leather (1 color)

### AVAILABLE OPTIONS:

3-person sofa  
1-seater armchair

## ANGELES

ITEM NO.: S54



### SPECIFICATIONS:

Upholstered with eco-leather  
Base made of brushed steel

### AVAILABLE VERSIONS:

Eco leather (1 color)

### AVAILABLE OPTIONS:

3-person sofa  
1-seater armchair



PANTHON

ITEM NO.: CV-B297BS-PU-8



**SPECIFICATIONS:**  
Upholstered with eco-leather  
Base made of lacquered steel  
Maximum load capacity 130 kg

**AVAILABLE VERSIONS:**  
Eco-leather (1 color)



TODO

ITEM NO.: FS56



**SPECIFICATIONS:**  
Upholstered with fabric  
Base made of powder-coated steel  
Maximum load capacity of 130 kg

**VERSIONS AVAILABLE:**  
Fabric (2 colors)





# ACCESSORIES

MONITOR HOLDER  
DLB851

ITEM NO.: DLB851



MONITOR HOLDER  
VNDLB502

ITEM NO.: VNDLB502



MONITOR HOLDER  
H01

ITEM NO.: H01



MONITOR HOLDER  
DLB851D2

ITEM NO.: DLB851D2



MONITOR HOLDER  
VNDLB502D

ITEM NO.: VNDLB502D



MONITOR HOLDER  
HD01

ITEM NO.: HD01



DESK DIVIDER  
140X120

ITEM NO.: SCREEN 140X120



DESK DIVIDER  
80X40

ITEM NO.: SCREEN 80X40



POP-UP SOCKET  
YO-706

ITEM NO.: YO-706



DESK DIVIDER  
100X40

ITEM NO.: SCREEN 100X40



POP-UP SOCKET  
YO-602A

ITEM NO.: YO-602A



ALUMINIUM CABLE  
COVER CF-A

ITEM NO.: CF-A





SINGLE CABLE TRAY  
XCB

ITEM NO.: XCB



DOUBLE CABLE TRAY  
XCA

ITEM NO.: XCA



CABLE SNAKE  
XGB

ITEM NO.: XGB



COMPUTER HOLDER  
ZJJ-C

ITEM NO.: ZJJ-C



CUSHION FOR LUMBAR  
SUPPORT ADJUSTMENT  
063-MAC-LUMBAR

ITEM NO.: 063-MAC-LUMBAR



CUSHION FOR LUMBAR  
SUPPORT ADJUSTMENT  
MSCTRD00001

ITEM NO.: MSCTRD00001



ALUMINIUM  
BASE

ITEM NO.: 0009



NYLON BASE

ITEM NO.: PA-N340



POLISHED ALUMINIUM  
BASE

ITEM NO.: AL-WS350



CHROME  
BASE

ITEM NO.: CH-6



CHAIR FOOTREST

ITEM NO.: CV-K019F



AD-18 ARMRESTS

ITEM NO.: AD-18



KM, KP, KW ARMRESTS

ITEM NO.: KM/KP/KW-ARM



TROLLEY T3

ITEM NO.: SFMTRX0017



SHELF FOR CABINETS  
XD-015, XD-18, XD-020

ITEM NO.: SHELF-XD-84,5X31



RUBBER CASTORS  
CT50-121G

ITEM NO.: CT50-121G



RUBBER CASTORS  
CT50-156BH

ITEM NO.: CT50-156BH



RUBBER CASTORS  
CT50-171G

ITEM NO.: 1198-B



RUBBER CASTORS  
CT50-201G

ITEM NO.: CT50-201G



RUBBER CASTORS  
CT50-71R

ITEM NO.: CT50-71R



NYLON CASTORS  
CT50-231

ITEM NO.: CT50-231



RUBBER CASTORS  
CT50-181G

ITEM NO.: CT50-181G



RUBBER CASTORS  
CT50-61G

ITEM NO.: CT50-61G



NYLON CASTORS  
CT50-022PAT

ITEM NO.: CT50-022PAT



NYLON CASTORS  
CT-01

ITEM NO.: CT-01



NYLON CASTORS  
CT-02

ITEM NO.: CT-02



RUBBER CASTORS  
CT60-391G

ITEM NO.: CT60-391G



RUBBER CASTORS  
CT60-905B

ITEM NO.: CT60-905B



NYLON CASTORS  
CT60-272

ITEM NO.: CT60-272 (CT-07)



RUBBER CASTORS  
CT60-281B

ITEM NO.: CT60-281B



RUBBER CASTORS  
CT60-431G

ITEM NO.: CT60-431G



NYLON CASTORS  
CT60-252

ITEM NO.: CT60-252 (CT-11)



RUBBER CASTORS  
CT65-431G

ITEM NO.: CT65-431G



NYLON CASTORS  
CT65-691PA

ITEM NO.: CT65-691PA



RUBBER CASTORS  
CT75-431G

ITEM NO.: 1198-B



NYLON FEET  
CT-06

ITEM NO.: CT-06



NYLON FEET  
GD-03

ITEM NO.: GD-03



NYLON CASTORS  
CT65-693PA

ITEM NO.: CT65-693PA



CHROME  
FEET

ITEM NO.: STOPKI CHROMOWANE



NYLON FEET  
GD-01

ITEM NO.: GD-01



HIGH NYLON FEET  
GD-02

ITEM NO.: GD-02

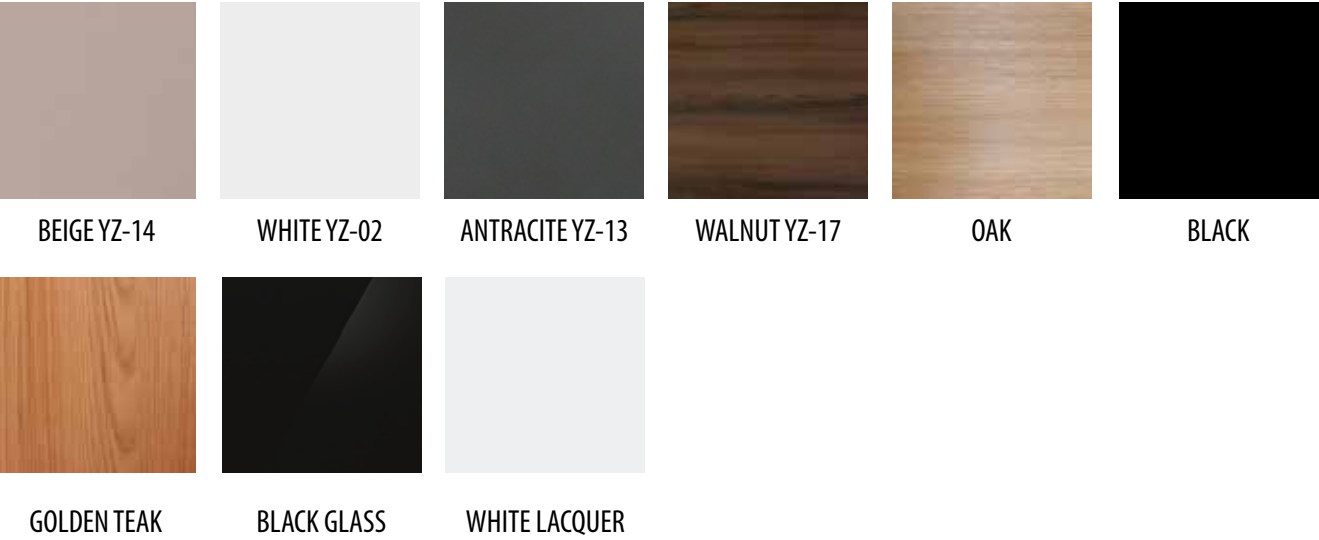




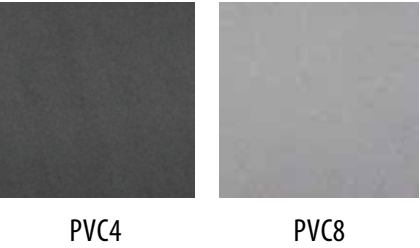
# FINISHING PATTERNS



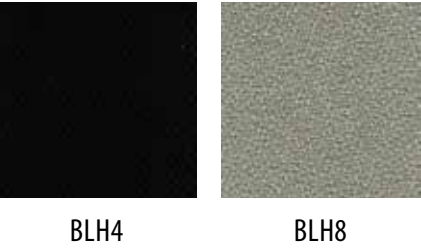
TYPES AND COLORS OF DESK TOPS



PVC FABRIC



BLH FABRIC



SM FABRIC



BL FABRIC



MT FABRIC



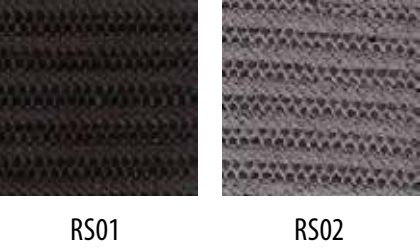
SM MESH



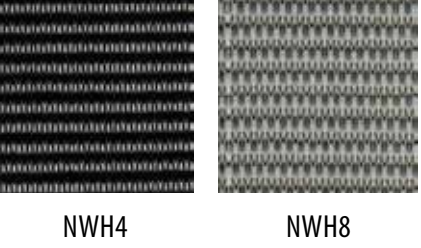
NYLON NL



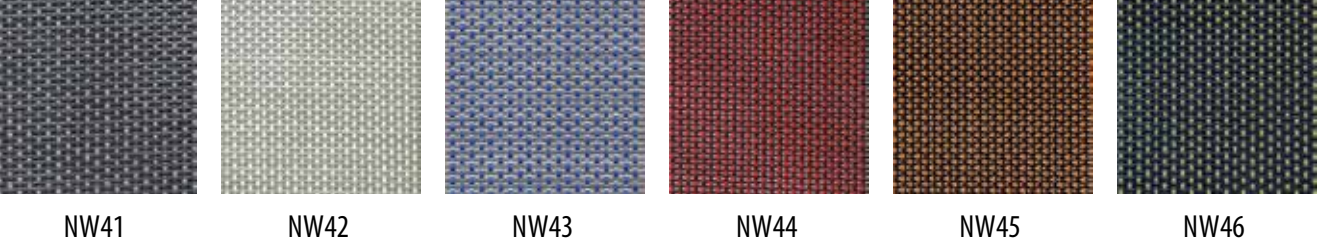
RS MESH



NWH MESH

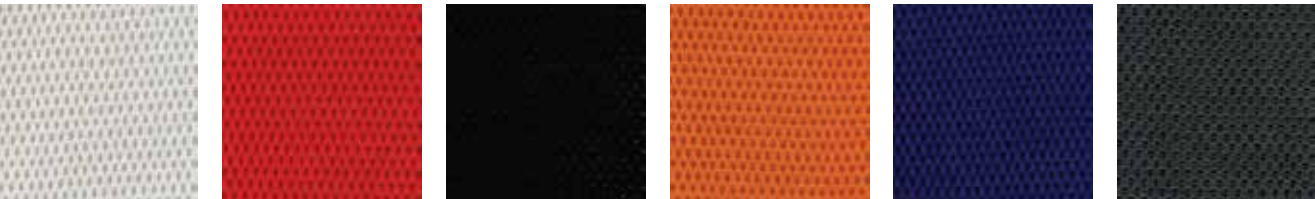


MESH NW

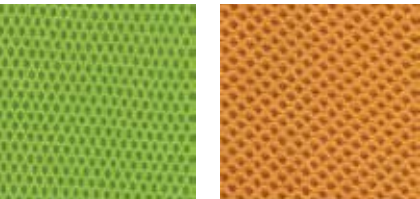




PS MEMBRANE FABRIC

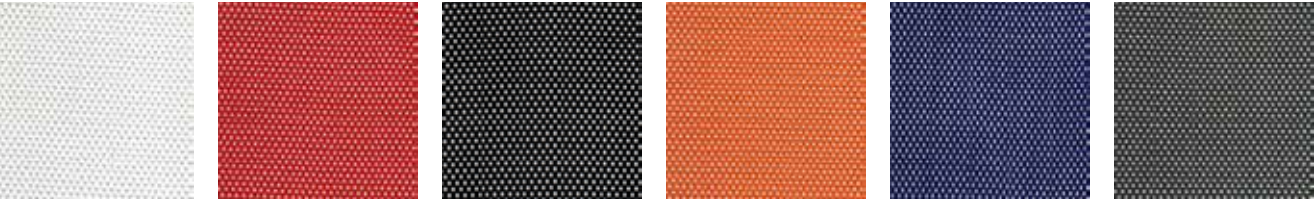


PS0 PS2 PS4 PS5 PS7 PS8

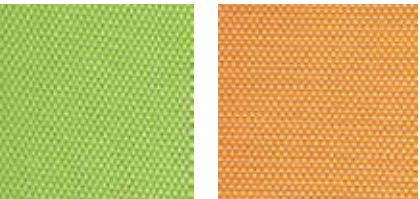


PS9 PS10

MESH C



MESH0 MESH2 MESH4 MESH5 MESH7 MESH8



MESH9 MESH10

ELASTOMER TPE



TPE12 TPE8 TPE-4 CZARNY

AK MESH



AK61 AK66

MATERIAL MUZE



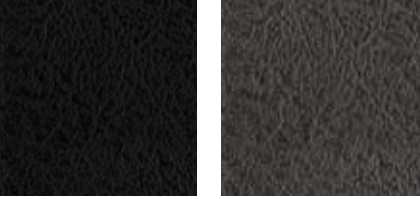
94FN 94HN 94JN 94PN 94TN

NATURAL LEATHER HL



HL4 HL3 HL0

ECO-LEATHER PU



PU K6880-1 PU K6880-4

DESIGN ECO-LEATHER PU



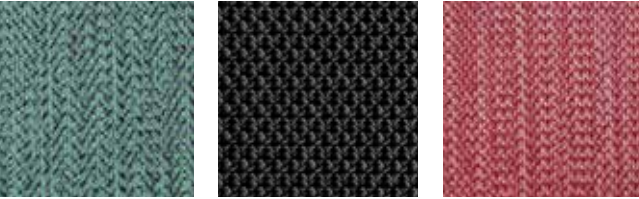
RPU-002 RPU-001 RPU-004

ECO-LEATHER BST 323



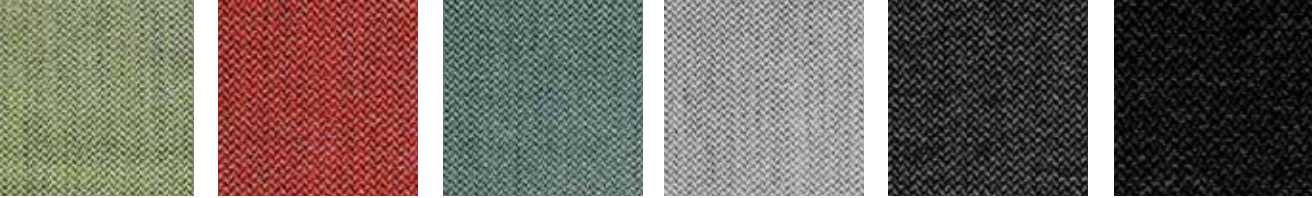
BST 323-011 BST 323-017 BST 323-019 BST 323-071

HY 2050 MESH



HY 2050-08 HY 2050-15 HY 2050-18

VICO FABRIC



VICO 008 VICO 012 VICO 018 VICO 022 VICO 024 VICO 026



VICO 041

## SL MESH



SI-01

## TO MESH

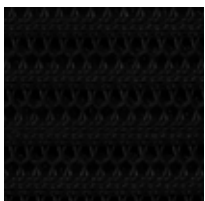


TO-07



TO-16

## CW-AN FABRIC



CW-AN10H



CW-AN30H

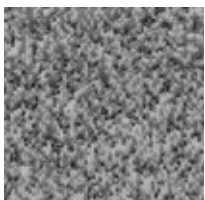


CW-AN40H



CW-AN80H

## MOON FABRIC



MOON U-03



MOON U-05



MOON U-07

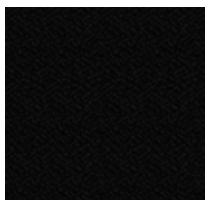


MOON U-08



MOON U-09

## TW-AE FABRIC

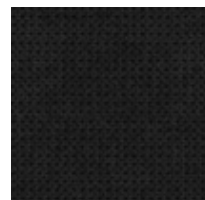


TW-AE-01H

## VARDO FABRIC

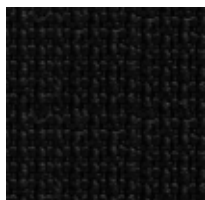


VARDO-11



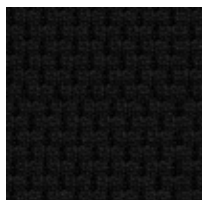
VARDO-19

## MOZART FABRIC



60999

## HY2095 FABRIC



HY2095-15



HY2095-30



UNIQUE  
DESIGN FOR PEOPLE

UNIQUE SP. Z O.O.  
05-300 MIŃSK MAZOWIECKI  
UL. WARSZAWSKA 53

SHOWROOM  
WARSZAWSKA 53  
05-300 MIŃSK MAZOWIECKI

INFO@UNIQUE-MEBLE.PL  
+48 25 758 78 11

SCAN THE CODE



WWW.UNIQUE-MEBLE.PL